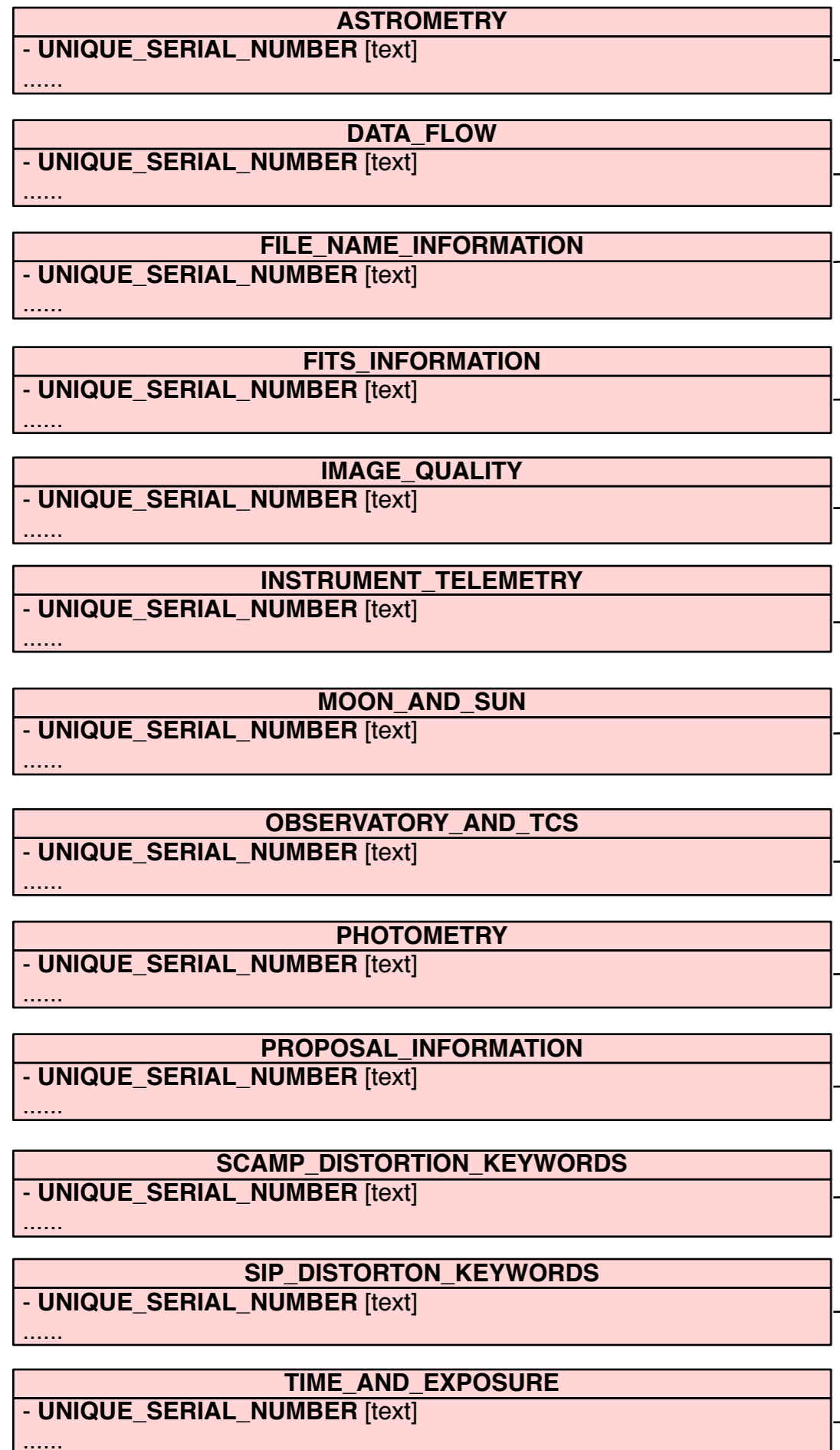
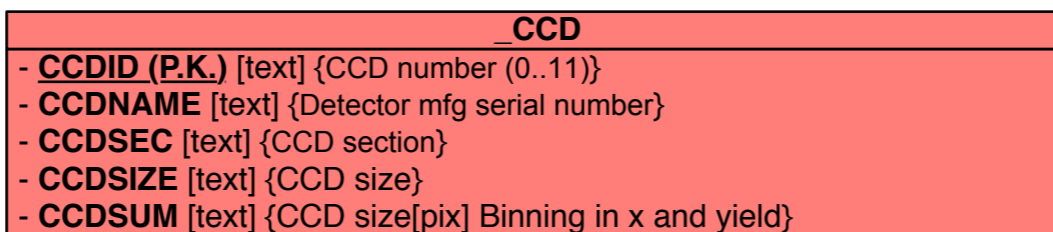
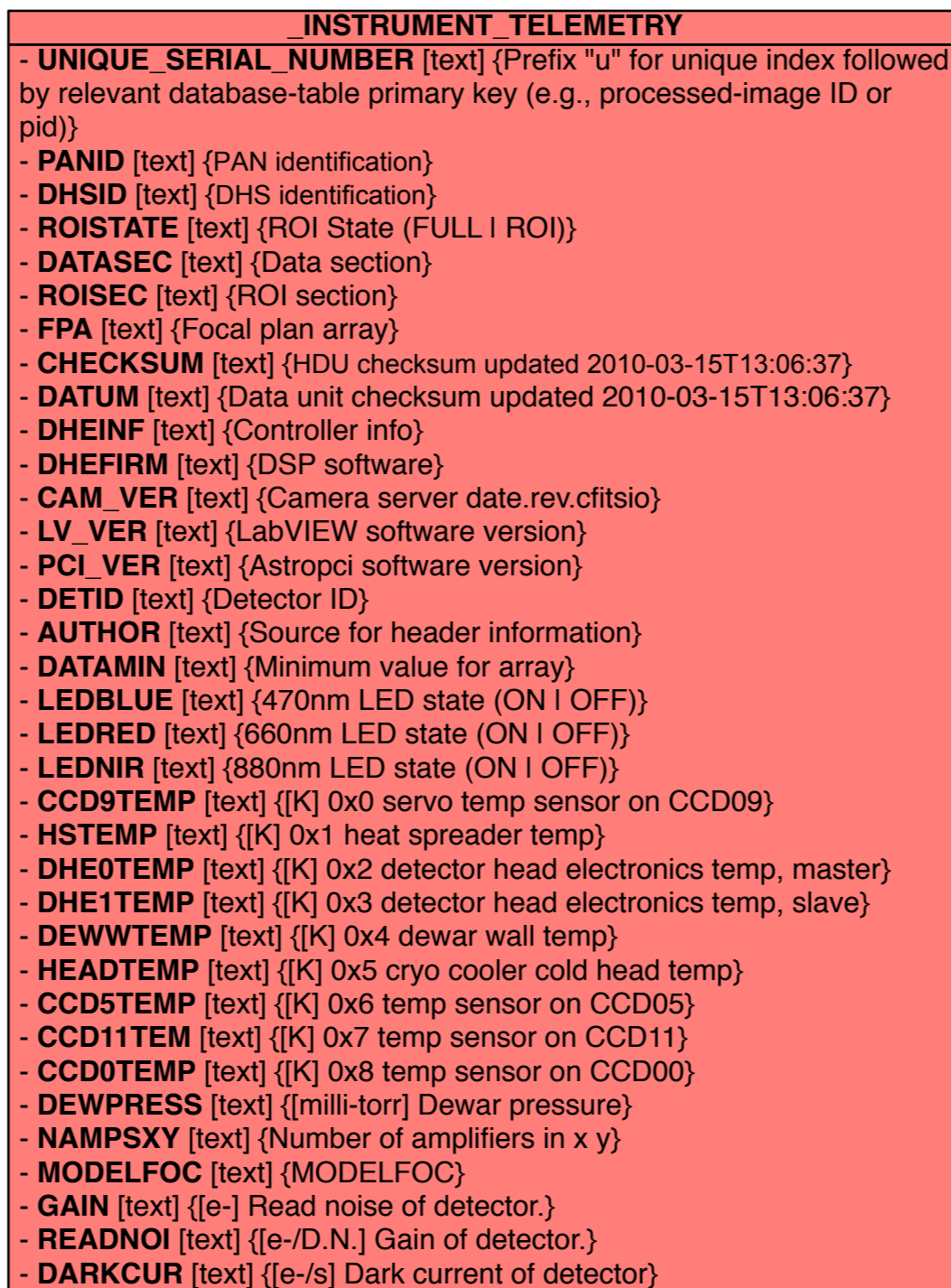
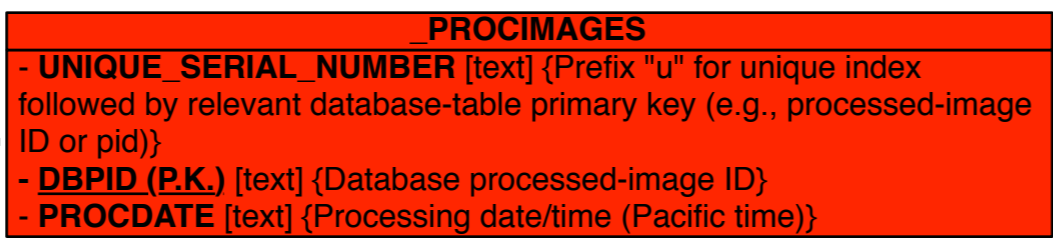


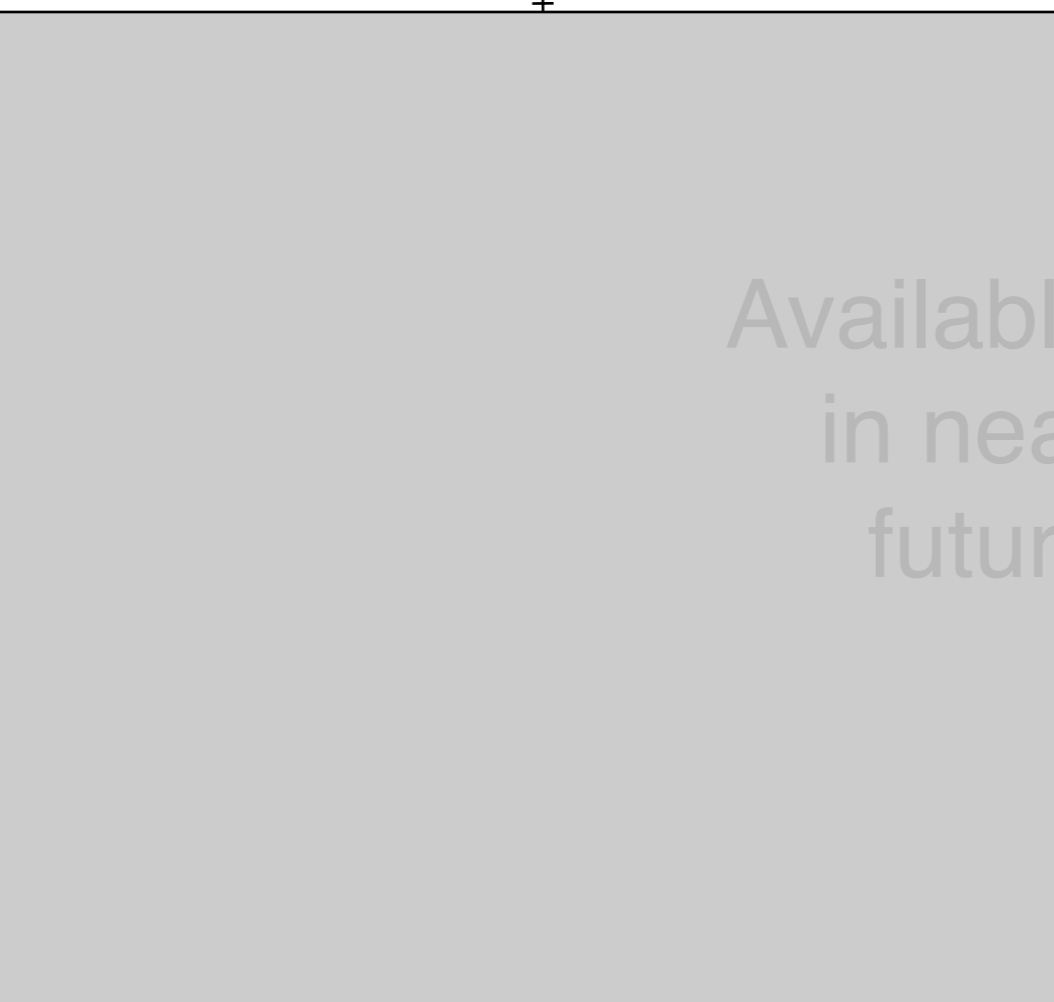
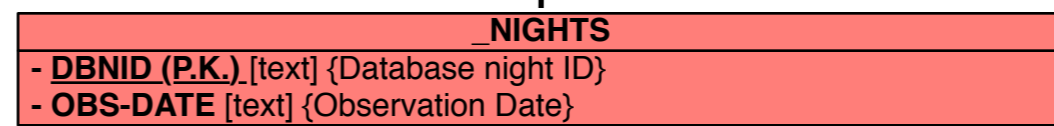
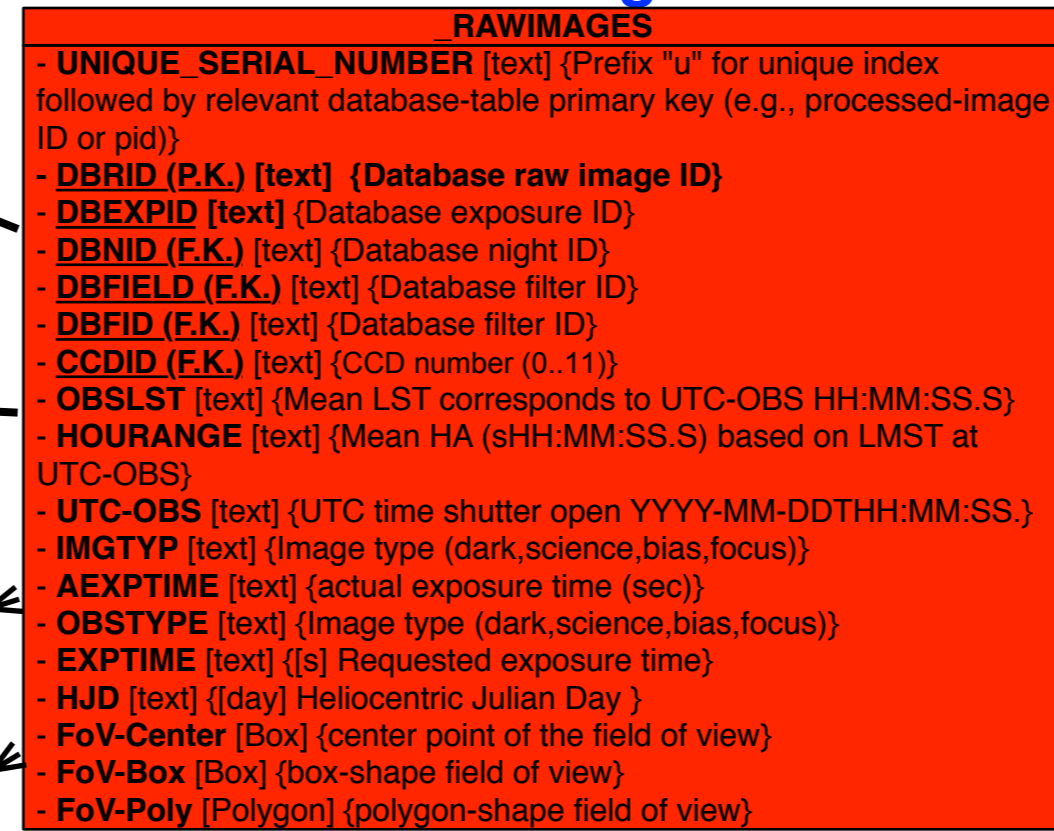
FITS Header Information



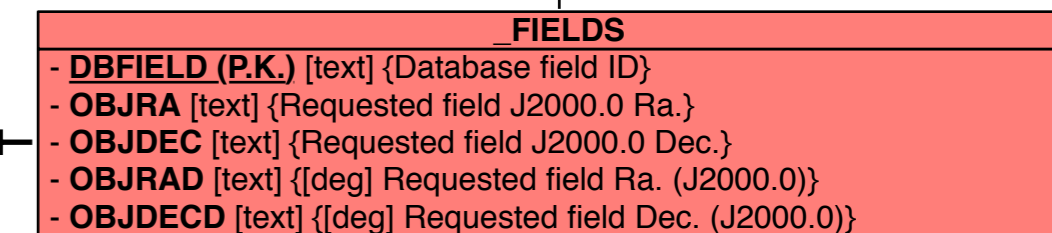
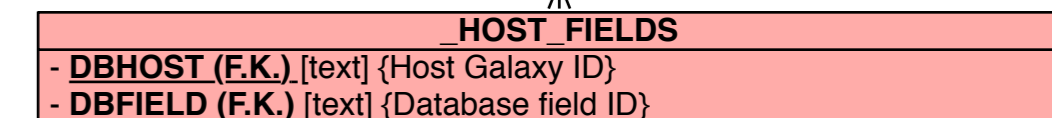
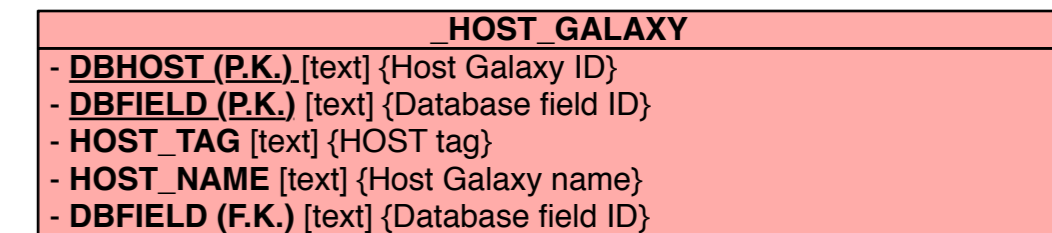
Processed Images



Raw Images



Fields and Galaxy



UNIQUE_SERIAL_NUMBER (F.K.)

UNIQUE_SERIAL_NUMBER (F.K.)

UNIQUE_SERIAL_NUMBER (F.K.)

DBFID (F.K.)

CCDID (F.K.)

DBNID (F.K.)

DBFIELD (F.K.)

DBNID (F.K.)

DBNID (F.K.)

DBFIELD (F.K.)

Legend: please refer to Crows Feet Entity-Relation and also UML general Diagram

Entity to Entity relation N..1

Entity to Entity relation 1 1 (P.K.): Primary Key (F.K.): Foreign Key

ER Model: db_ptf_er_v4_2

Instrument and Telemetry

Nights and Observation Tasks

Astronomical Objects